

**City Fit - Healthcare**

**ADZ5003, City Fit, 2019-20**

**Design progress - Week 5**

**Rebecca Chick**

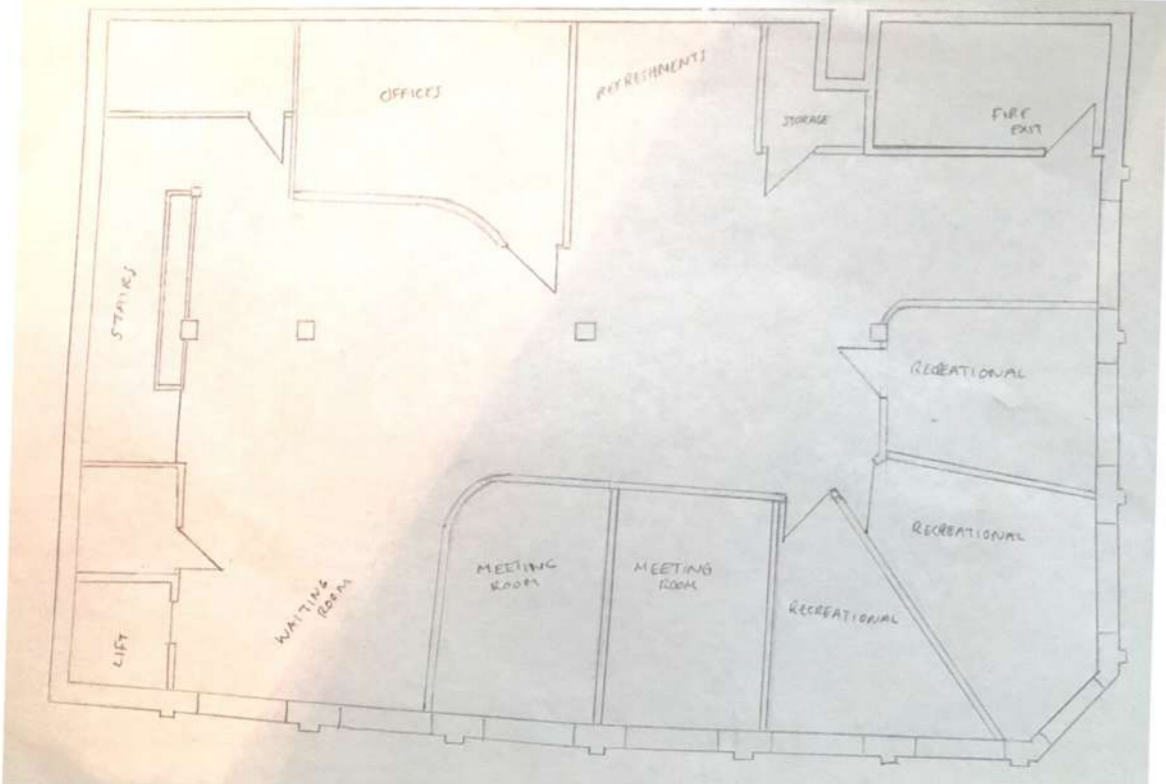
**ID: st20139007**

**Healthcare**

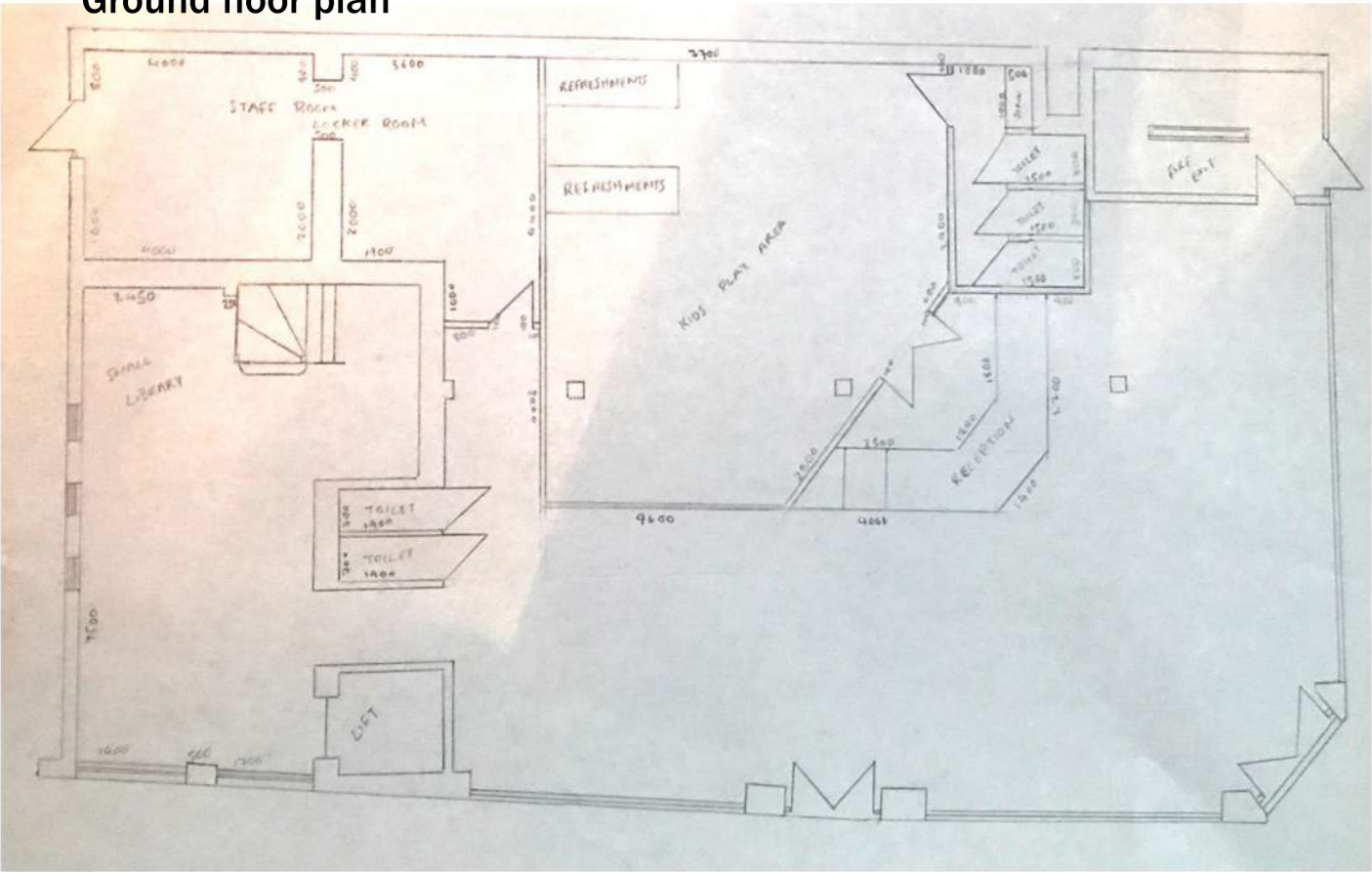
Original design thought

Here shows what my original design thought looked like at my last tutorial, the drawings below only focus on the groundfloor and first floor. By speaking to Fausto the changes that I needed to look at were how much circulation I needed as there was too much on the plans I had produced and the sizes of the rooms as they were too small. Whilst also thinking about having a plant room and one floor with just offices.

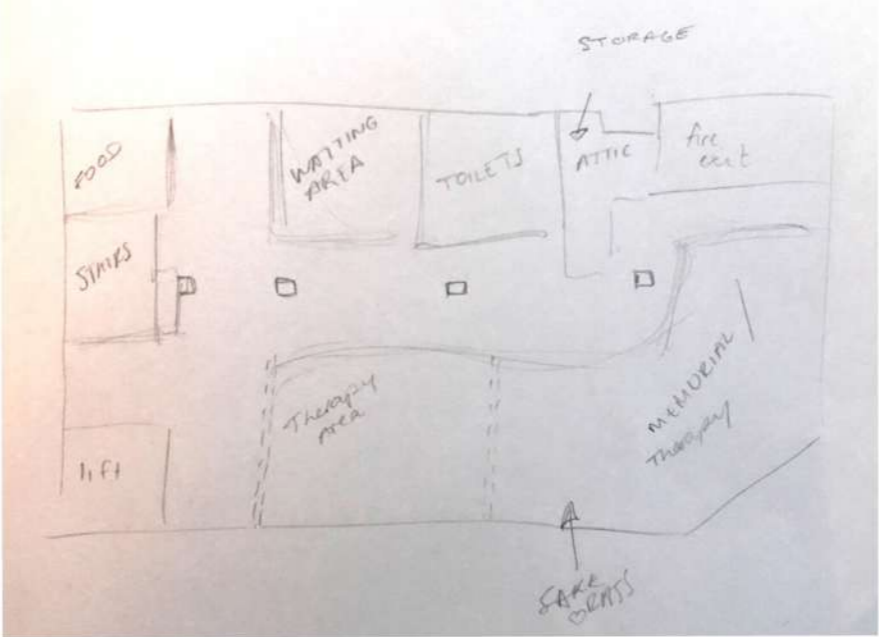
First floor plan



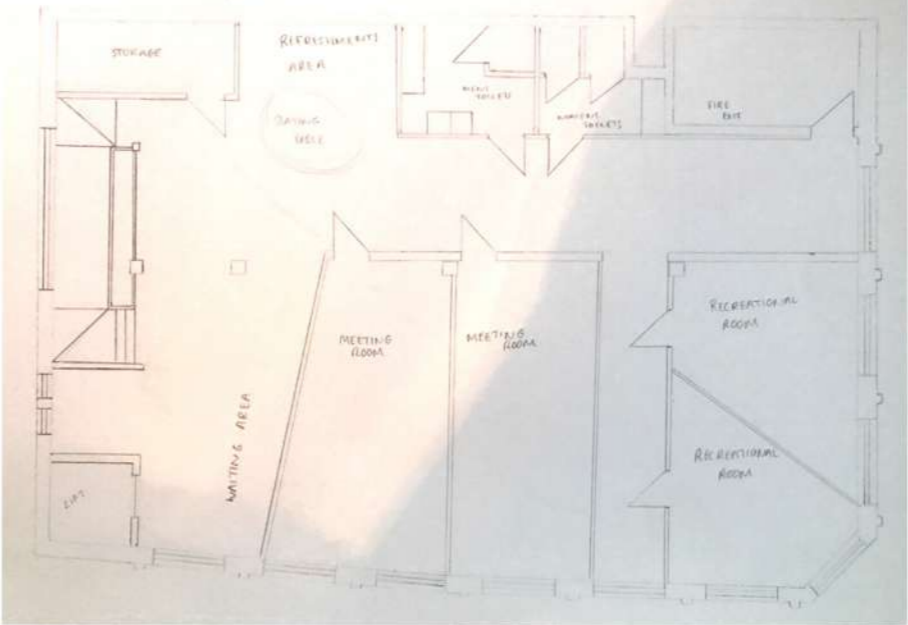
Ground floor plan



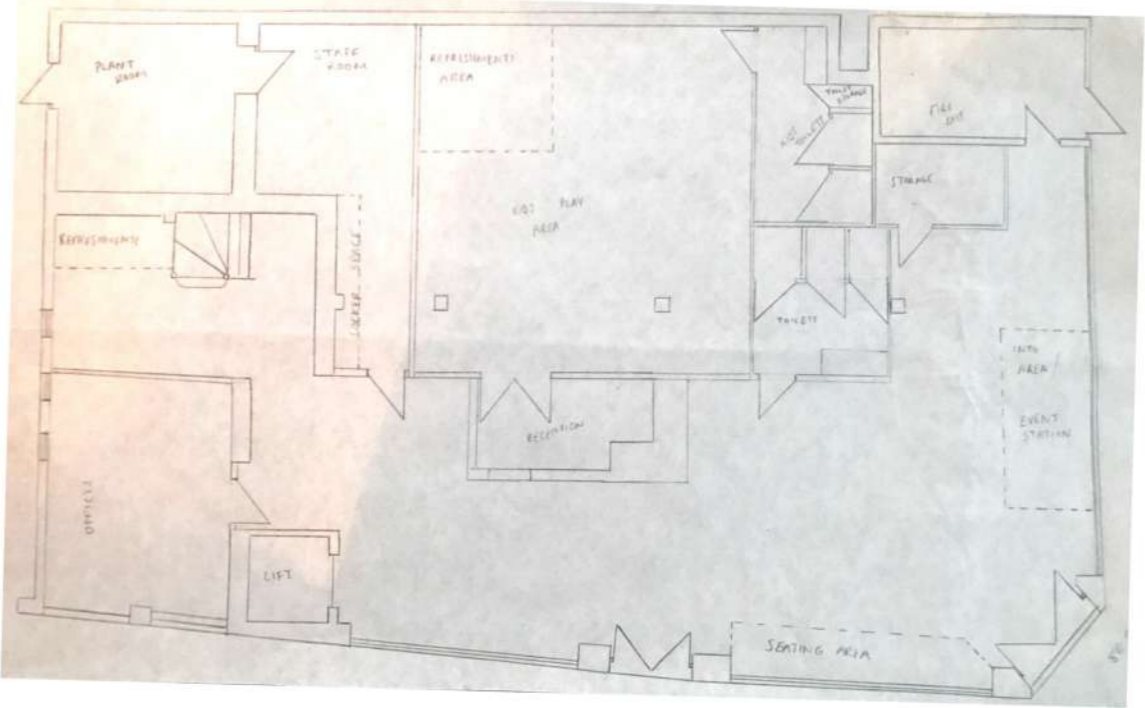
Third floor plan



First/Second floor plan



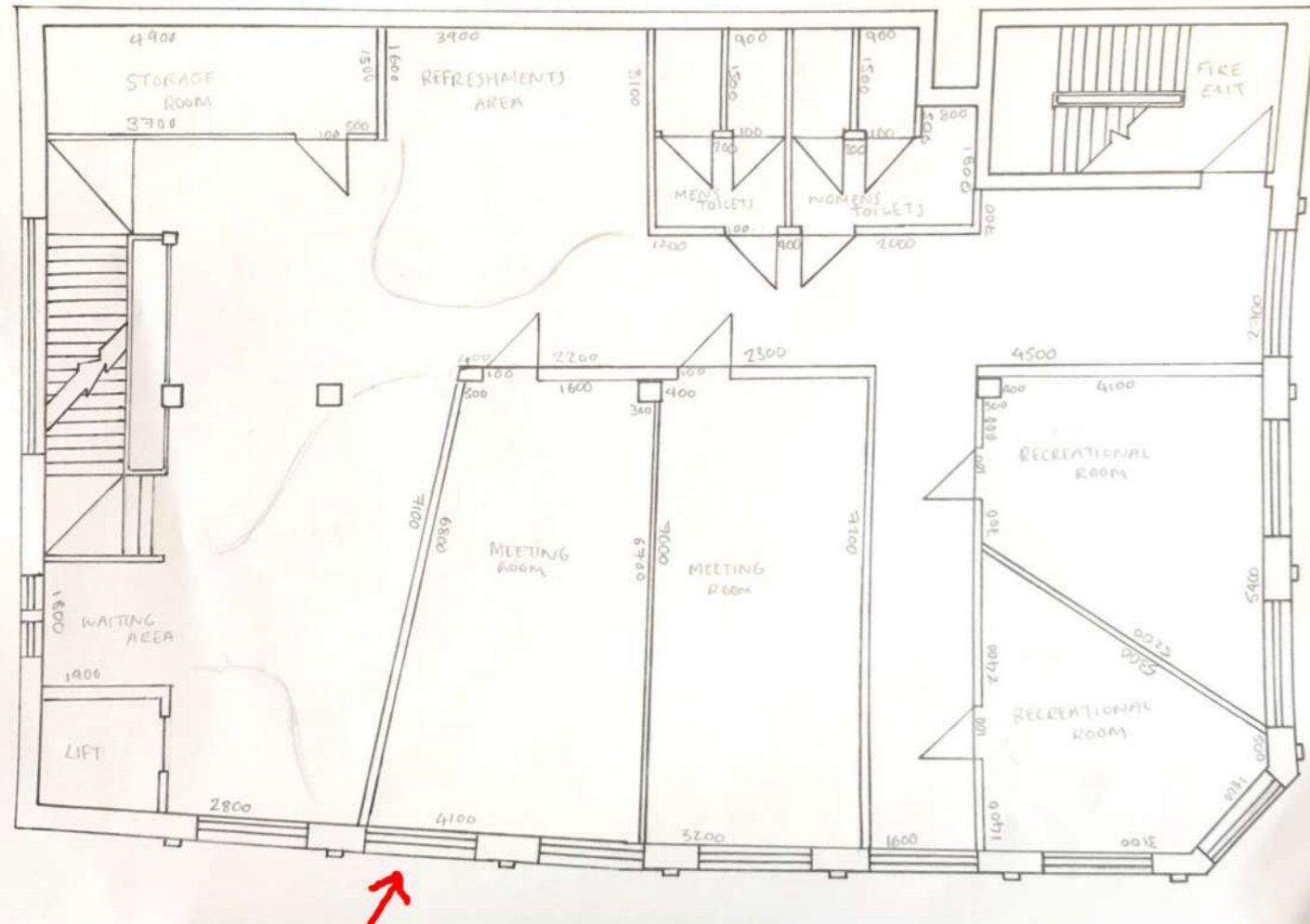
Ground floor plan



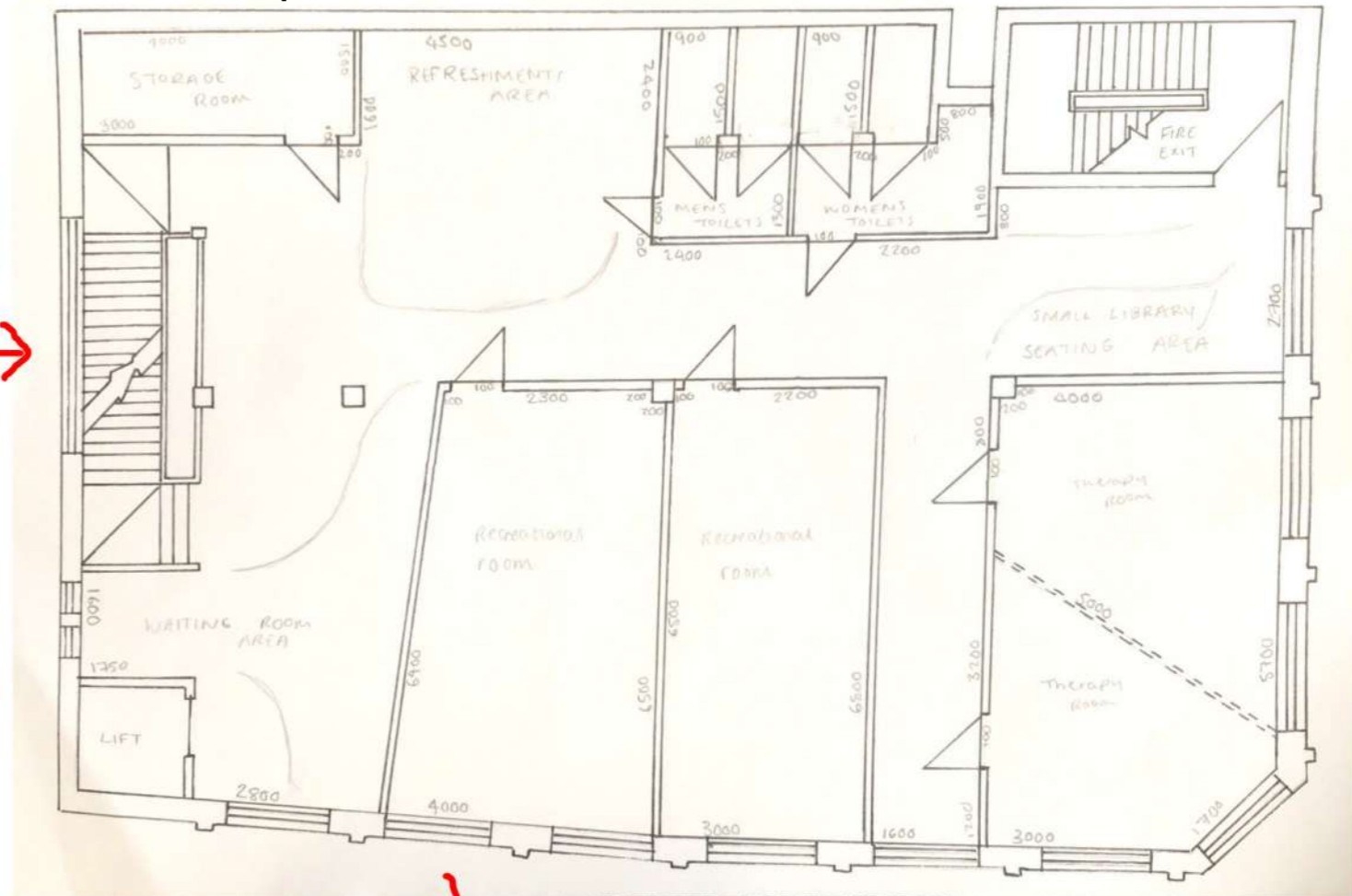
Developing design thought

By developing my floor plan designs I had focused on a variety of area that needed to change. By looking at my plans now I feel that it has worked very well as I have made the rooms bigger and the circulation smaller whilst also adding a plant rom in and the offices to one floor. However, the scaled drawing I have produced are based again on the ground floor and first floor, as the second floor I want to have the same layout with slight difference, where for the third floor I produced a quick hand sketch where I was working out a rough layout.

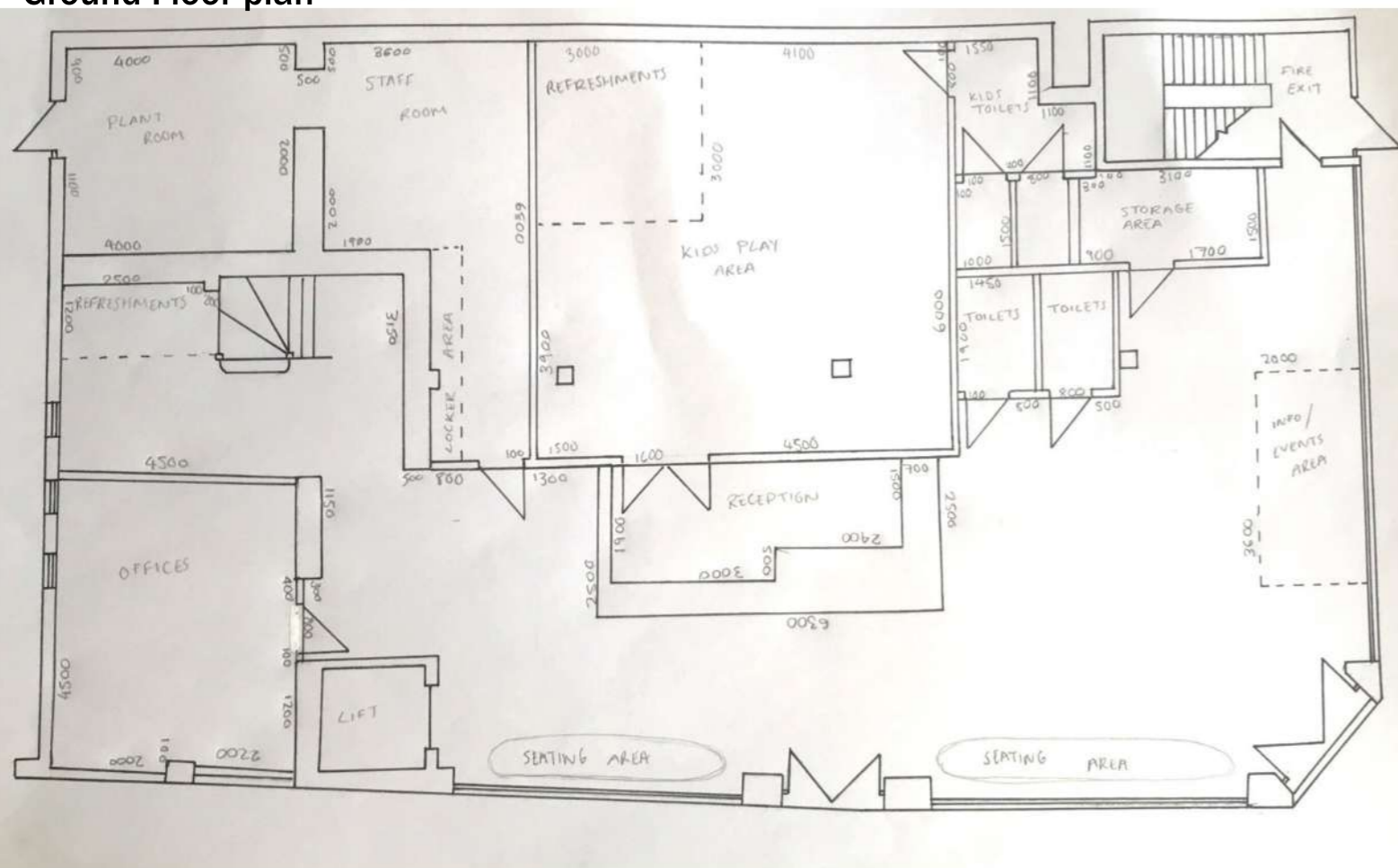
First Floor plan



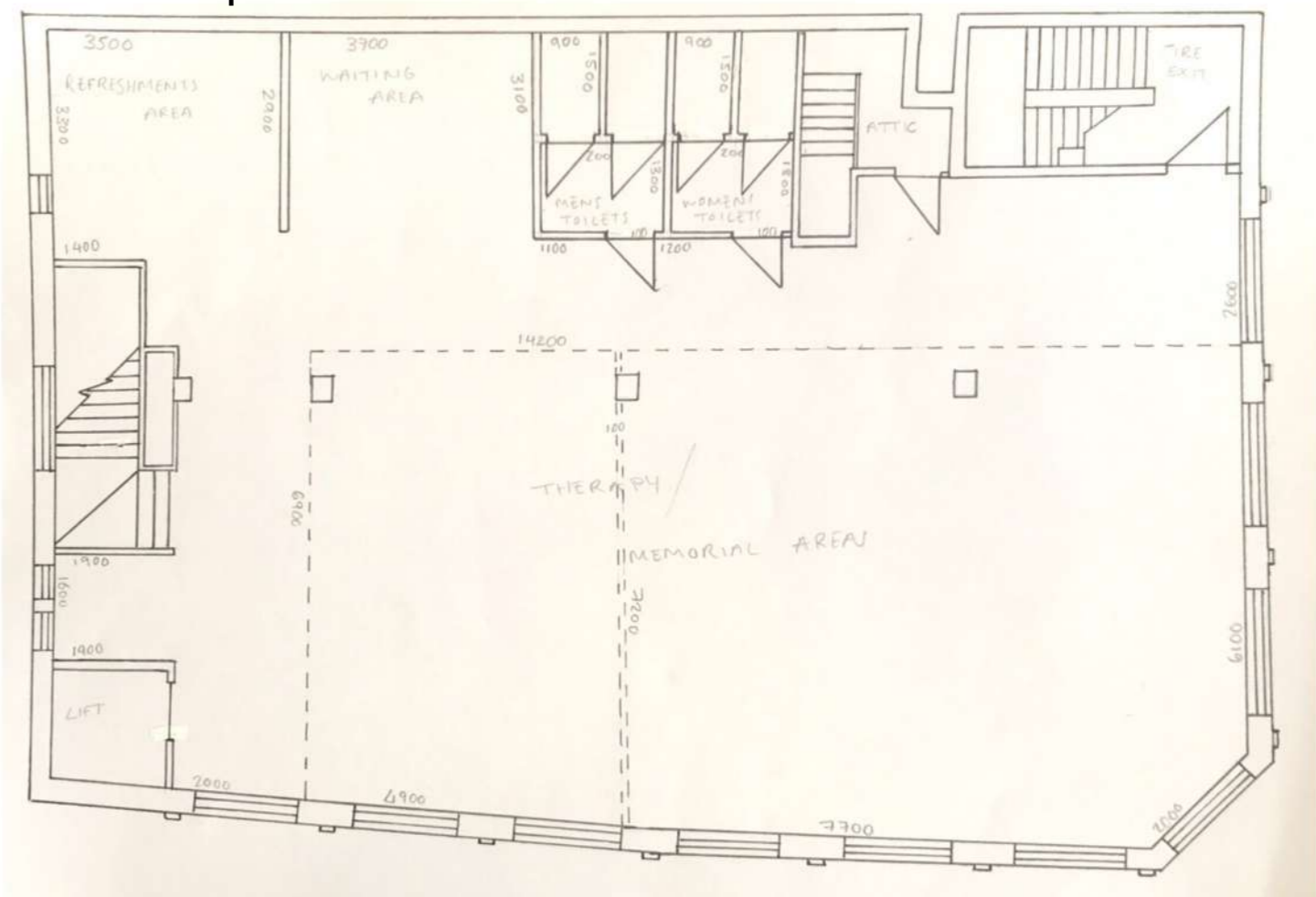
Second Floor plan



Ground Floor plan



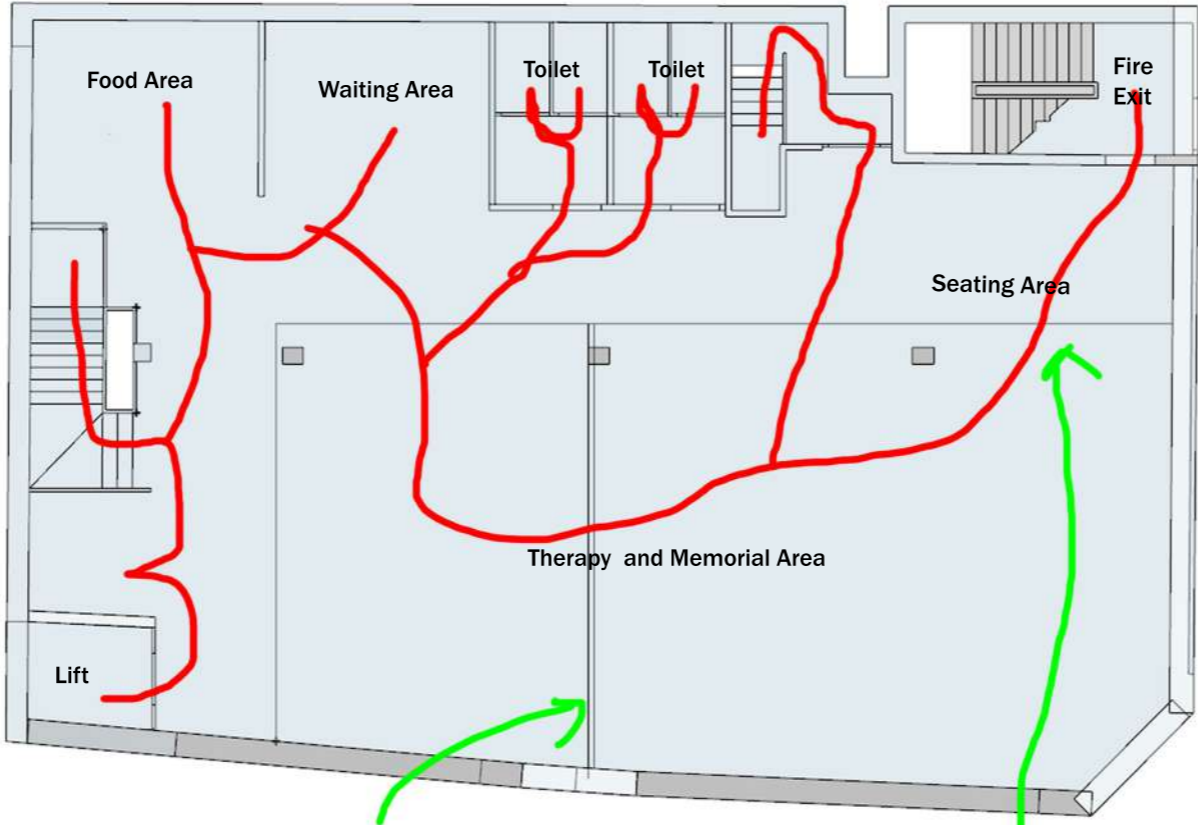
Third Floor plan



1:100 plans showing main functions and horizontal circulation, There will also be circulation from the windows for the use of fresh air.

The red lines are showing the circulation flow and the access points to each of the spaces showing where the doors are on the plans.

Third floor plan

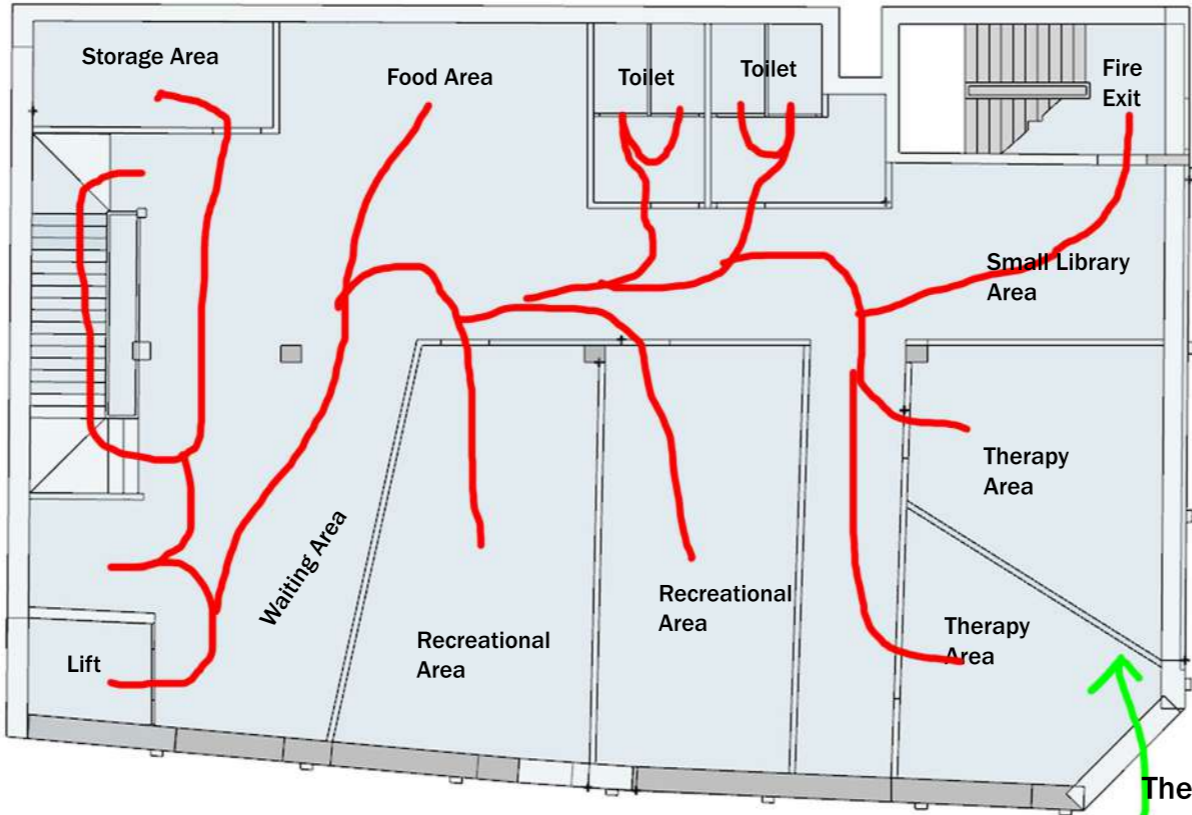


The thicker line shows that the space can be sectioned of by an adjustable wall shutter

These lines are showing the outline of the open plan on the space I will be using for the therapy memorial area

For the third floor I have kept it just to being a therapy/ memorial area as I want it to be a more relaxing area and open so they feel free to roam as I want to make it feel like a small garden space and make it feel real as possible. For example dove releases, yoga and therapy dogs can take place in the space.

Second floor plan



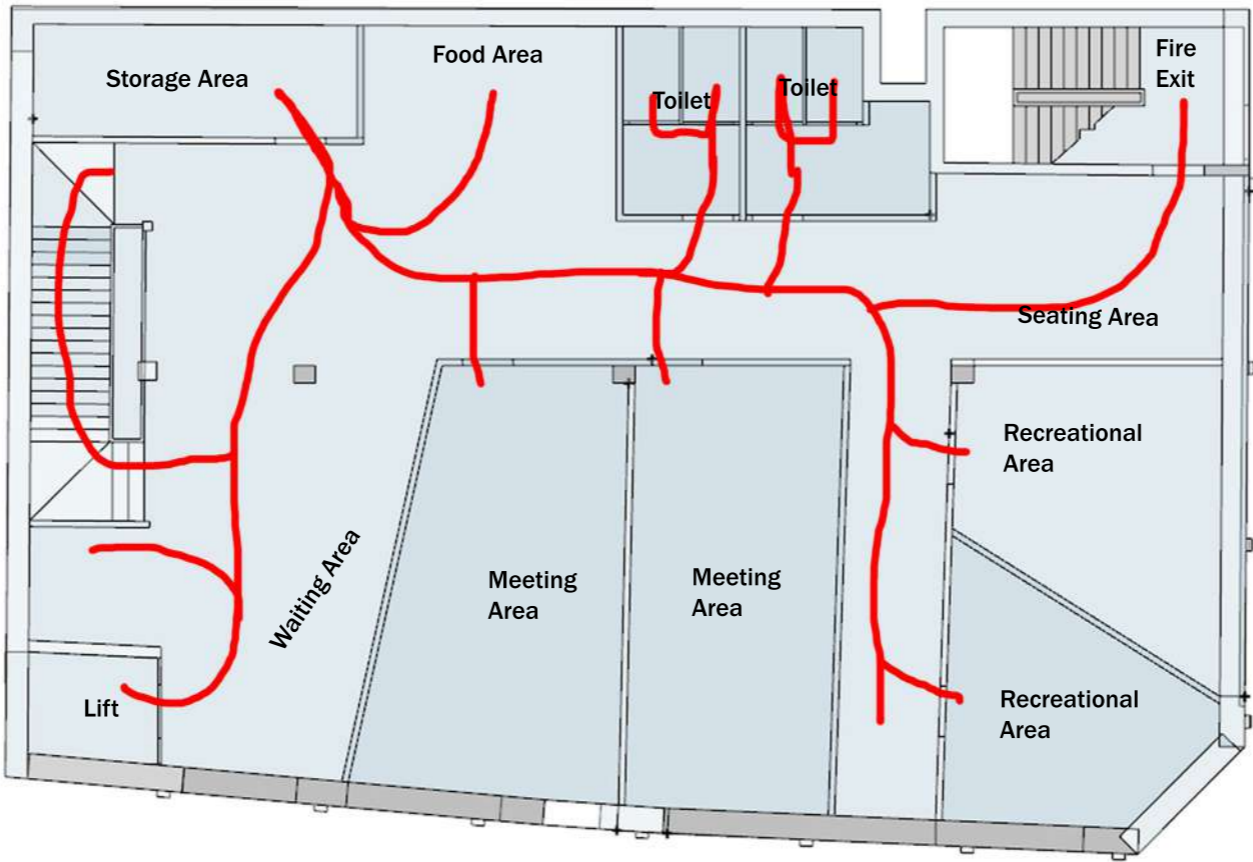
The thick line here shows that it is an adjustable wall shutter to either make the therapy room into one or two rooms.

The second floor has the same floor design but I have added a small reading area at the end of the hallway and instead of having two meeting rooms I have put them as recreational rooms and also two therapy rooms which can be converted into one room if needed eg art event as it can be very relaxing so I put them at the front of the design as there are more views to look at.

1:100 plans showing main functions and horizontal circulation, There will also be circulation from the windows for the use of fresh air.

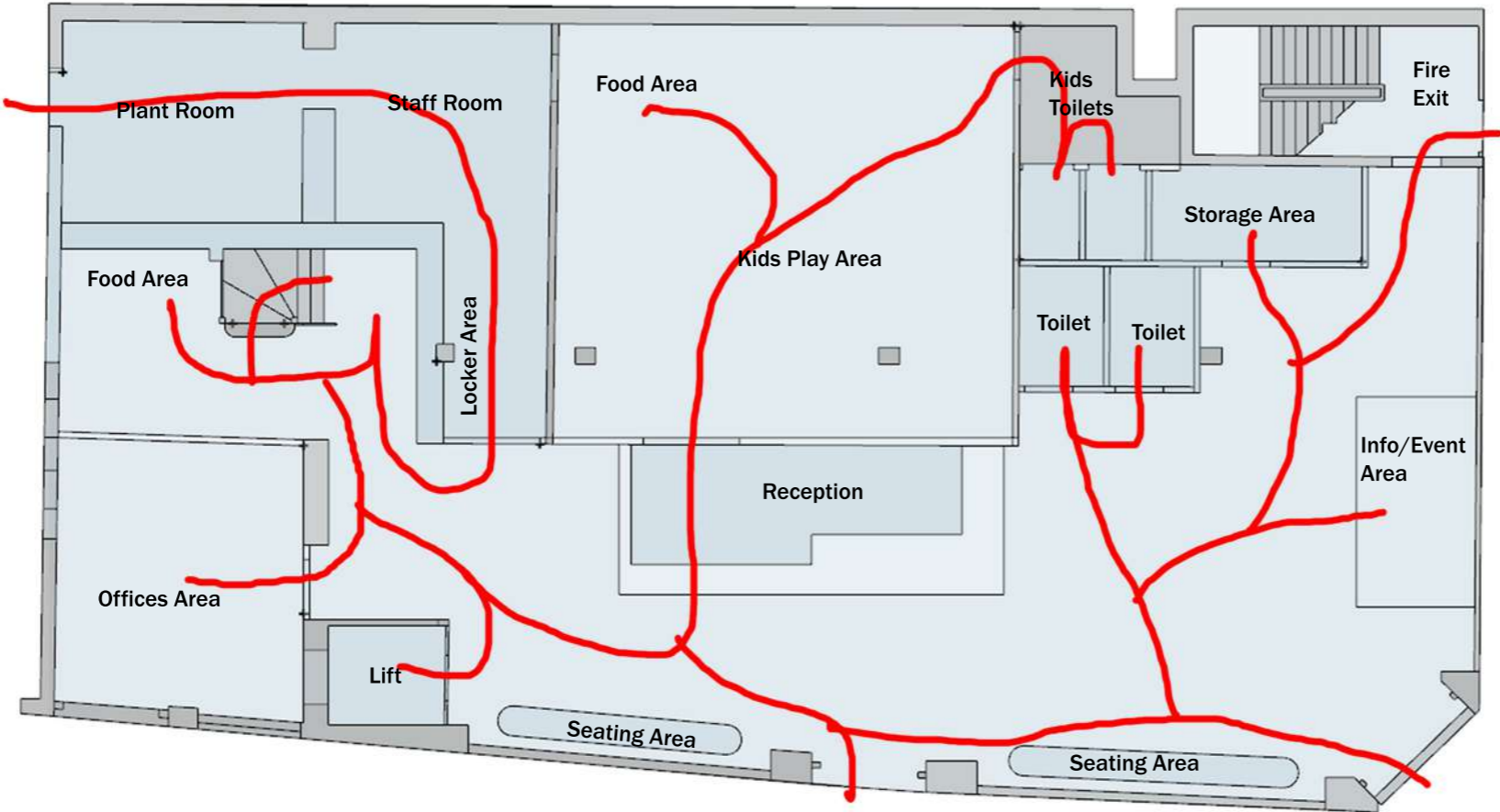
The red lines are showing the circulation flow and the access points to each of the spaces showing where the doors are on the plans.

First floor plan



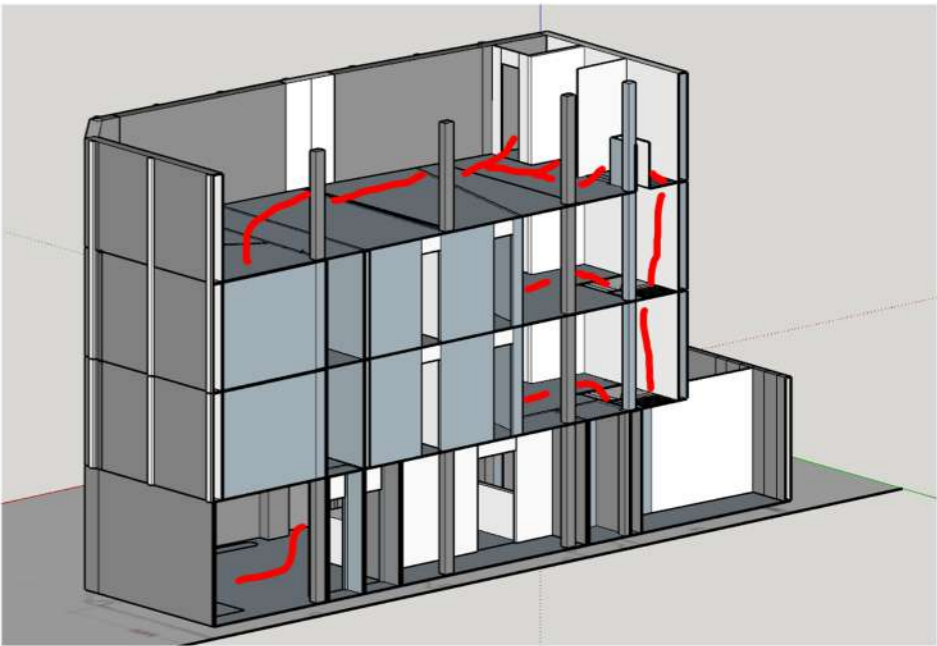
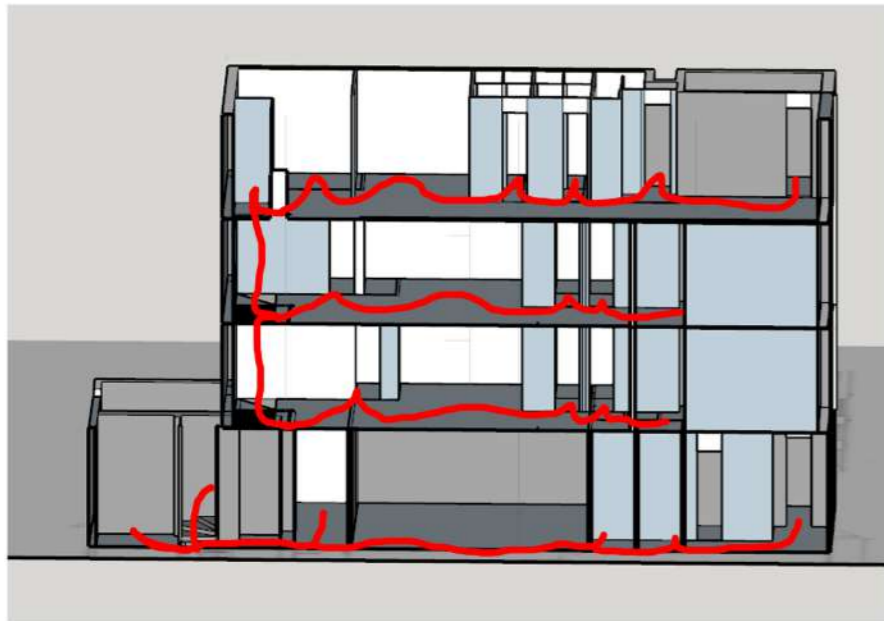
The first floor I have decided to have two meeting rooms on the same floor where there will also be two recreational rooms, as my previous thought was to have meeting rooms on all three floors but there was no need to. I have also added additional seating near the fire exit which would lookout onto the main road. I have also listened from my last tutorial to work on the size of the rooms as they were too small to be functional.

Ground floor plan

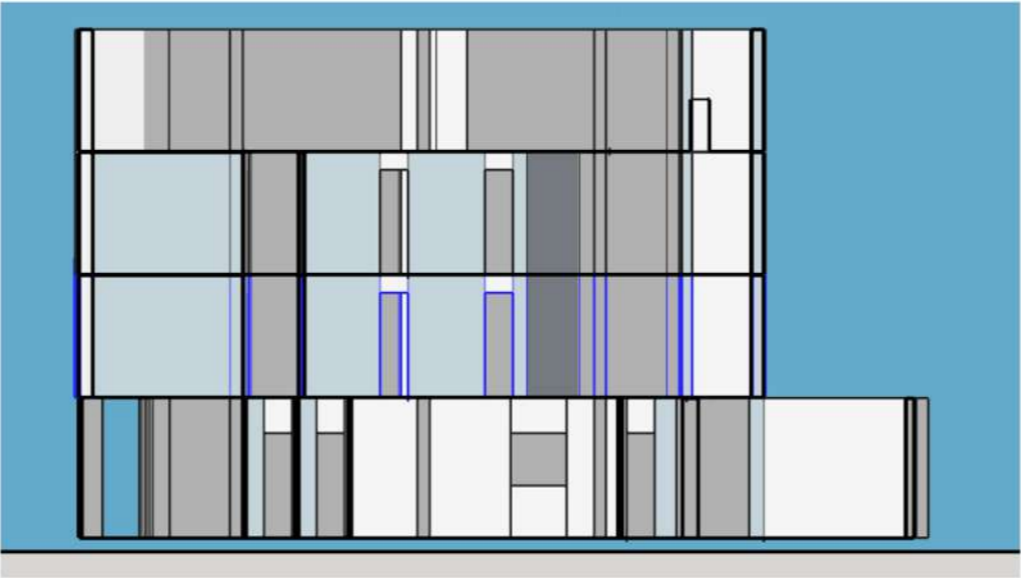
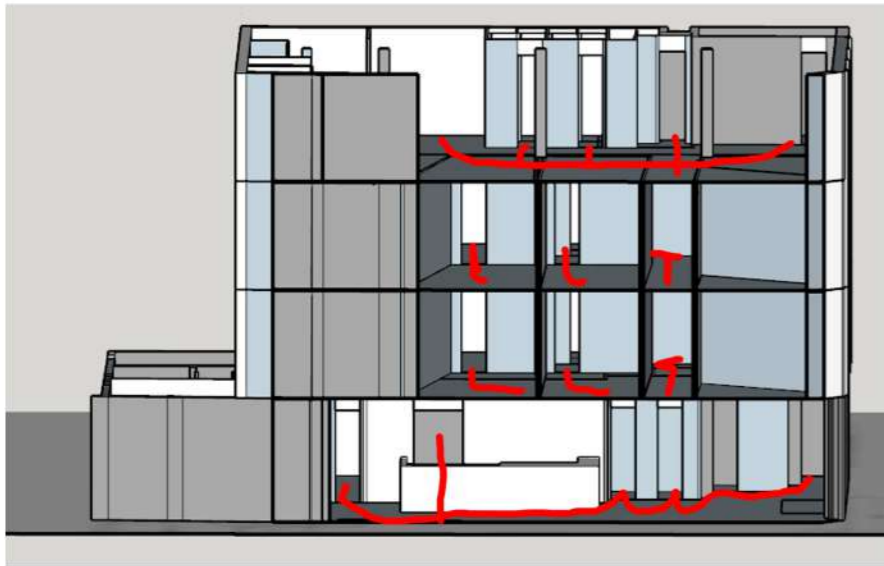


For the ground floor I have listened to what Fausto had said and place a plant room at the back the building so that there is two entering points. I have also added a storage room space, two toilets for general use with the kids toilets at the back which is linked to the kids play area. Whilst also placing the office space on the ground floor instead of having them on mutiple floors.

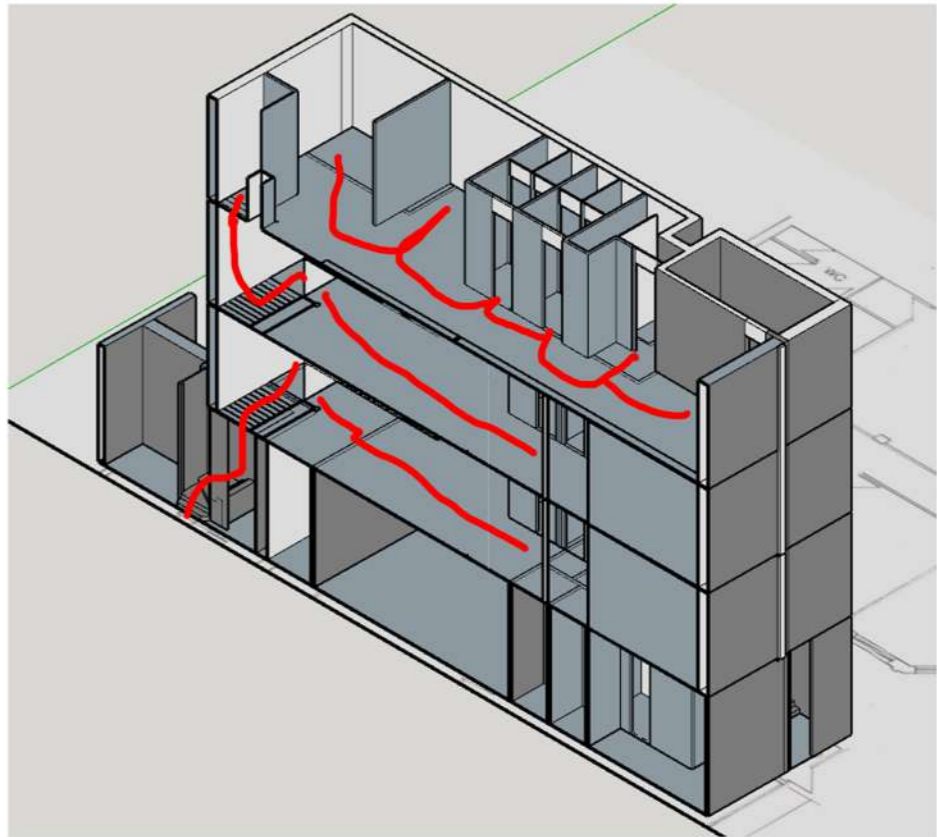
1:100 section showing vertical circulation



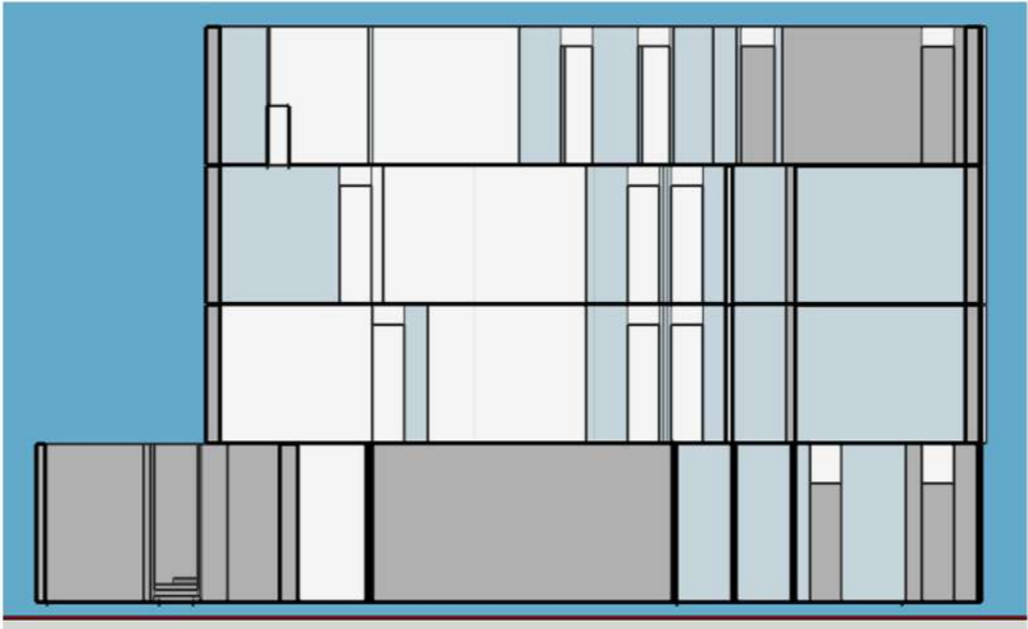
Sections showing the spaces from back and front of the building showing past the stair case.



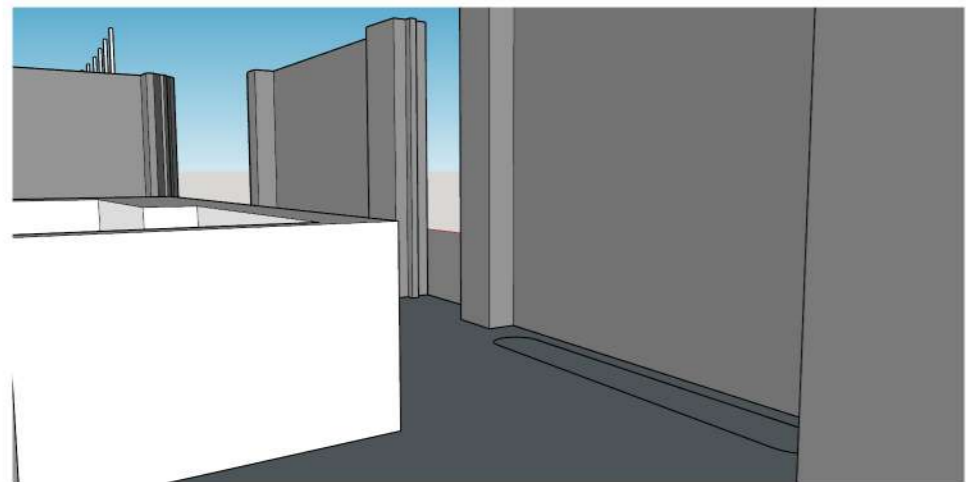
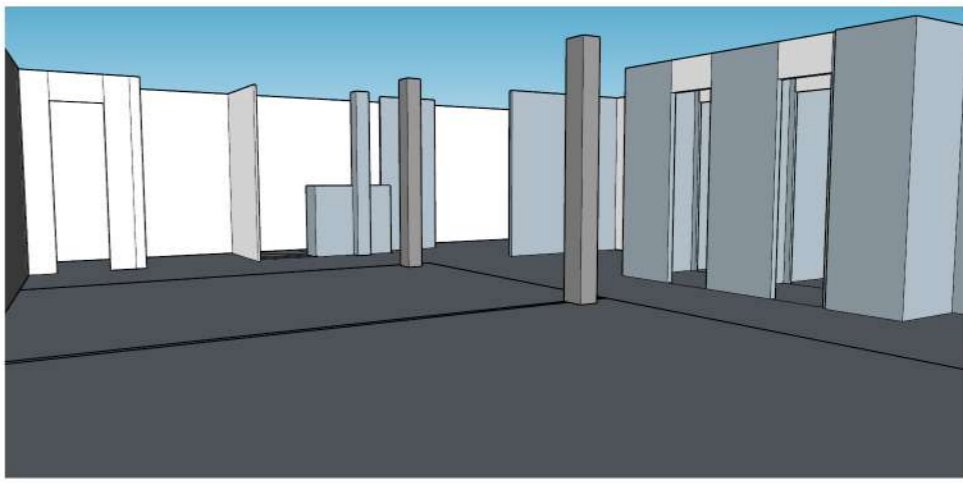
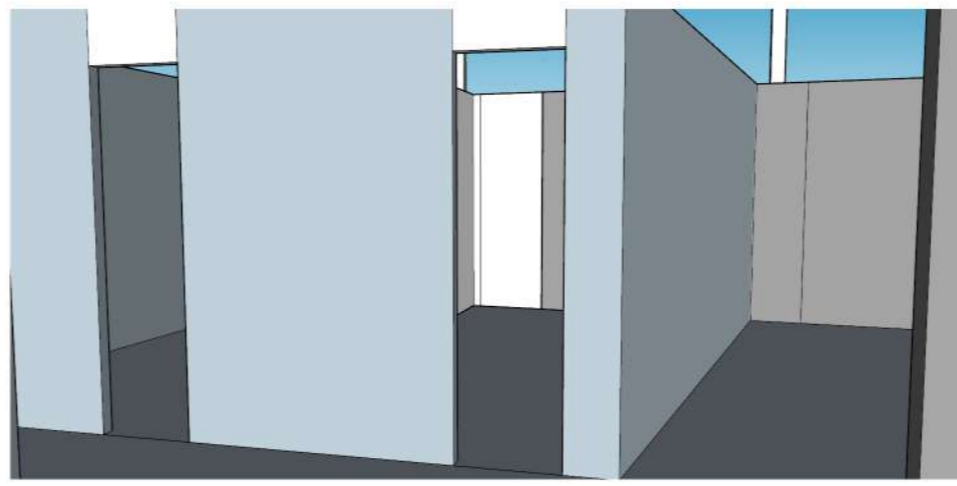
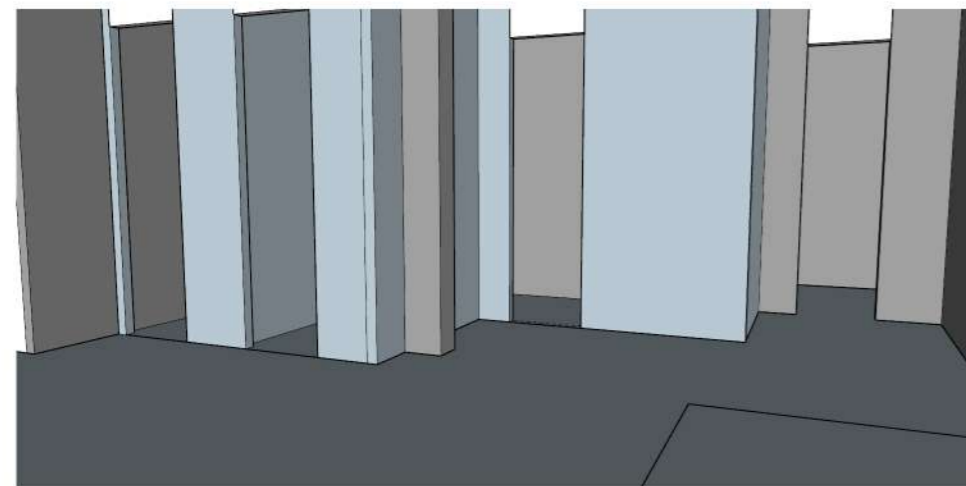
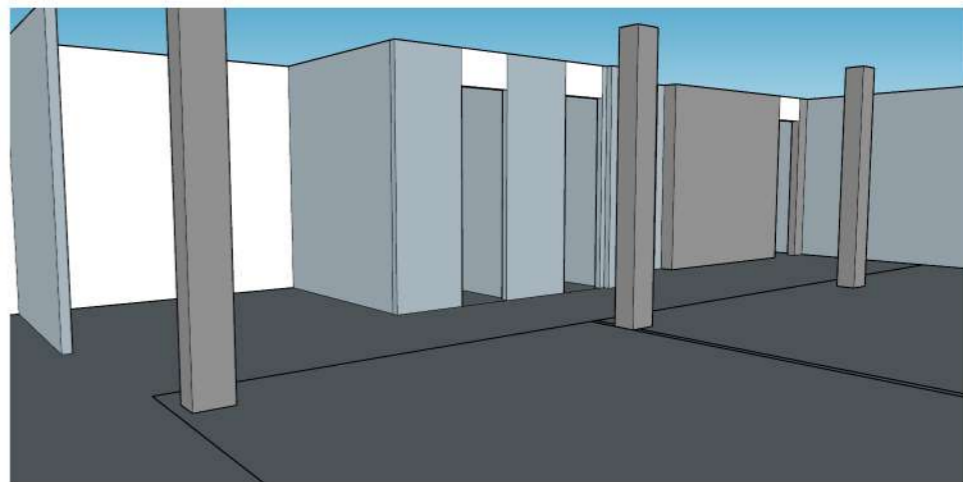
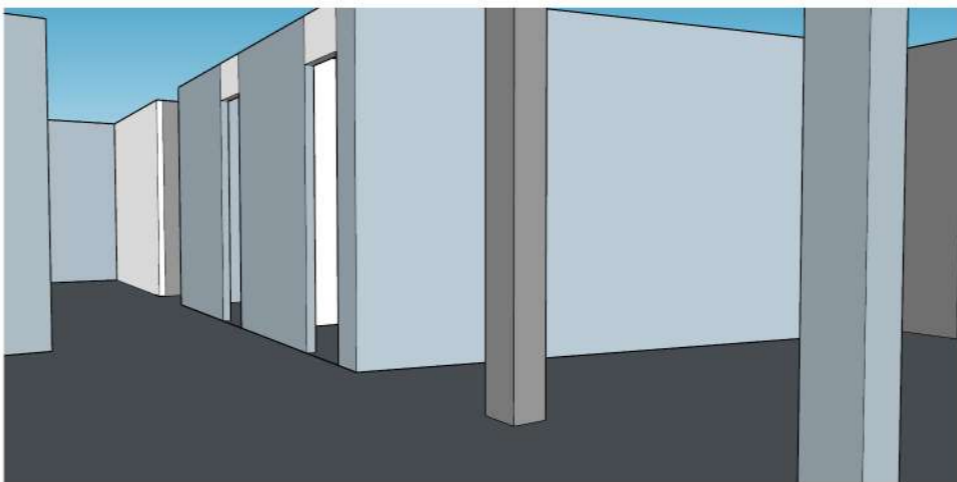
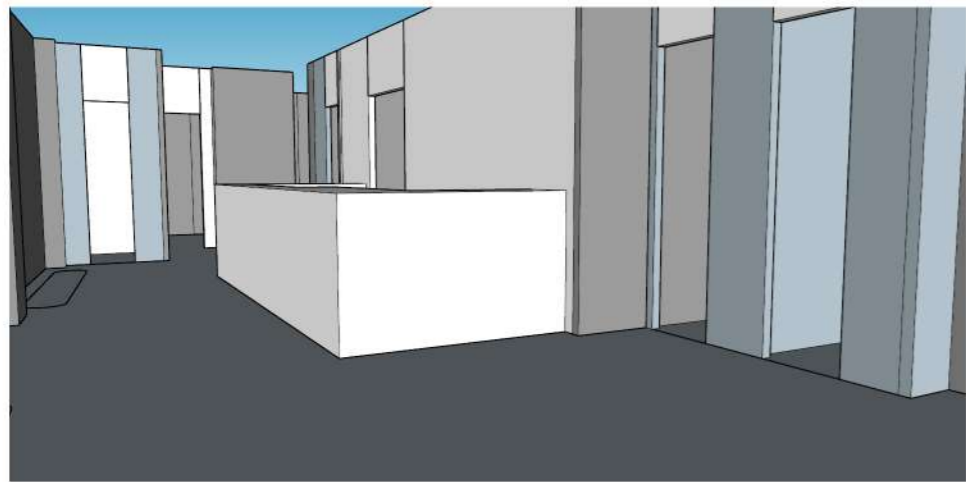
Sections showing the spaces just on the stair cases showing how you access each floor.



An Iso showing vertical circulation showing the walls on each floor and how they look



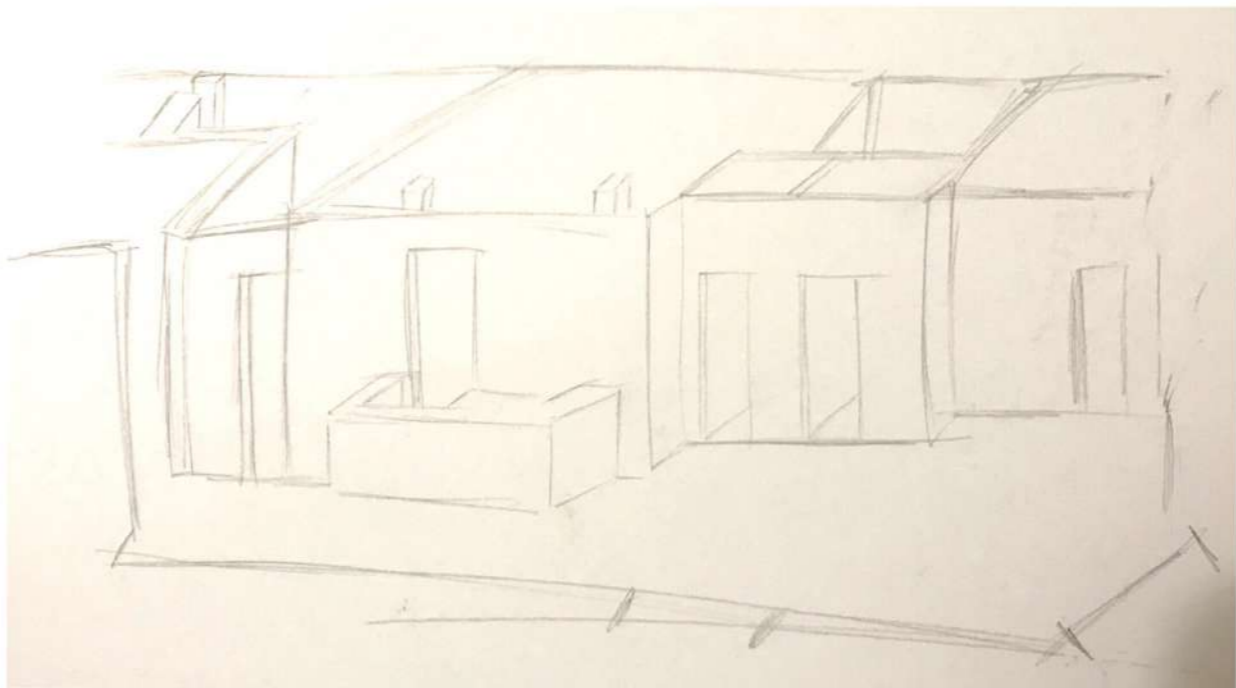
3d sketchup visuals showing roughly what my plans look like without any materials



**Ground Floor plan (visuals)**  
Here I have shown what the ground floor will look like after making changes since my last tutorial. I have chosen to show a view point from the entrance on what you would see when entering, I have shown how the toilets, storage and fire exit are making sure there is enough walkway and the third view is showing what you can see when looking out from the lift and office area.

**First & Second Floor plan (visuals)**  
For the first and second floor I have decided to keep them roughly the same which only slight changes. So for the second floor I have made the storage space abit smaller and the therapy rooms don't have a solid wall as I want the space to change from being two rooms to one if one the therapy sessions is painting so that there are a range of views and natural light entering the space.

**Third Floor plan (visuals)**  
For the last floor I have designed it in a way so that it is very open planned and make it look like a garden space so it can be very relaxing as I want it to be a therapy space e.g therapy dogs can play and roam freely with the patient or family. But also to have a memorial area e.g dove releases and craft making to help through the difficult time (from a loss or so they feel hope in that it will get better)



Here I have then produced a very quick sketch of the Ground floor just to work out and see if I can develop my design plan even more to the best standard it can possibly go.