

**City Fit - Healthcare**

**ADZ5003, City Fit, 2019-20**

**Design progress - Week 9**

**Rebecca Chick**

**ID: st20139007**

**Healthcare**

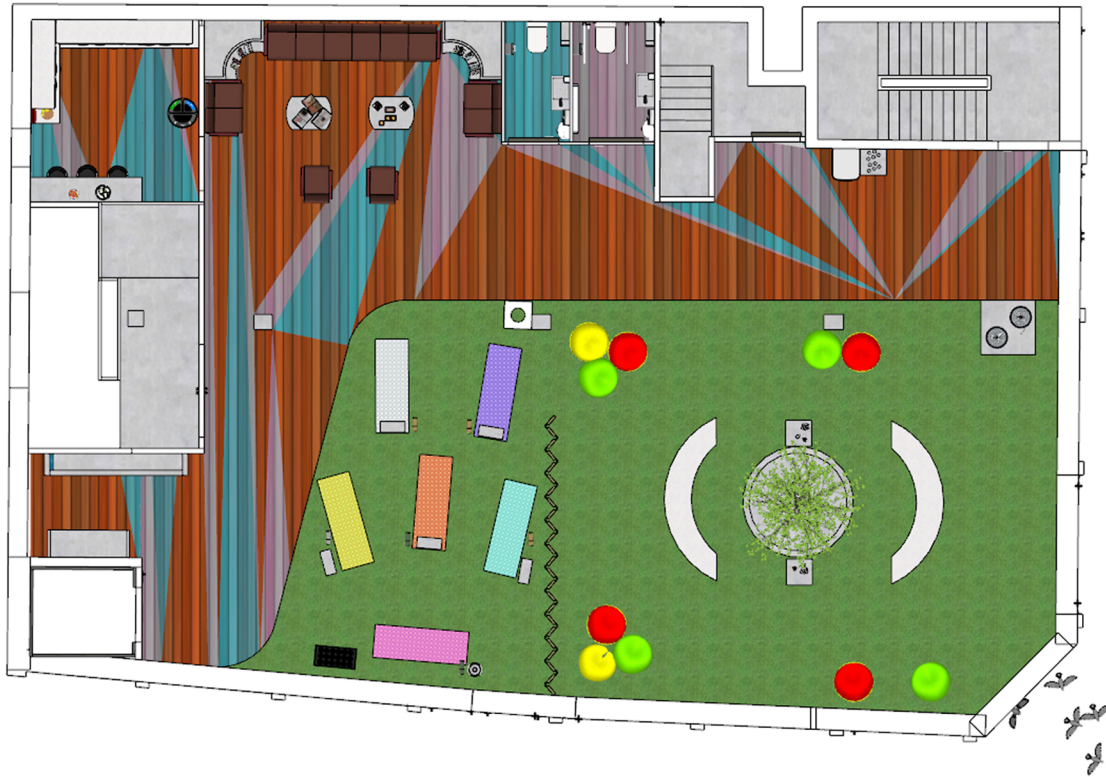


# FLOOR PLANS

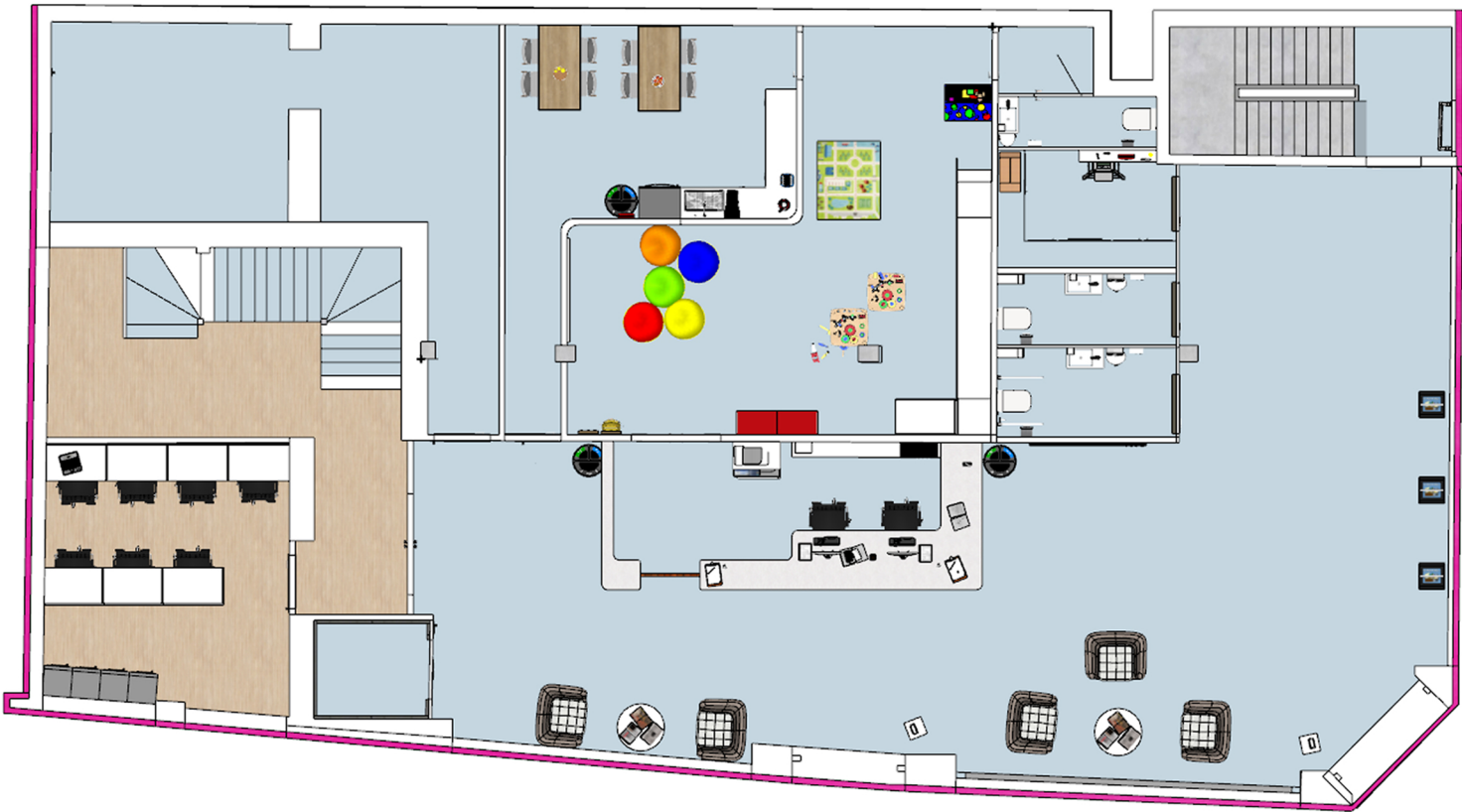
Second-floor



Third-floor



Ground-floor



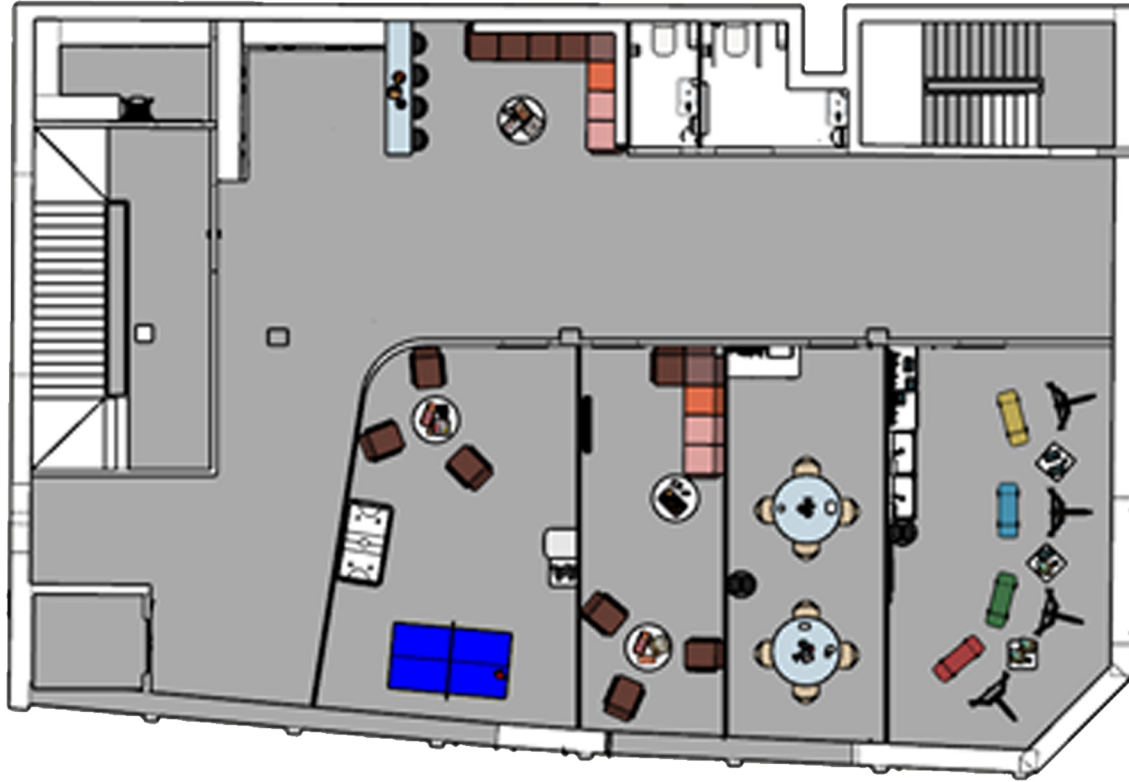
First-floor



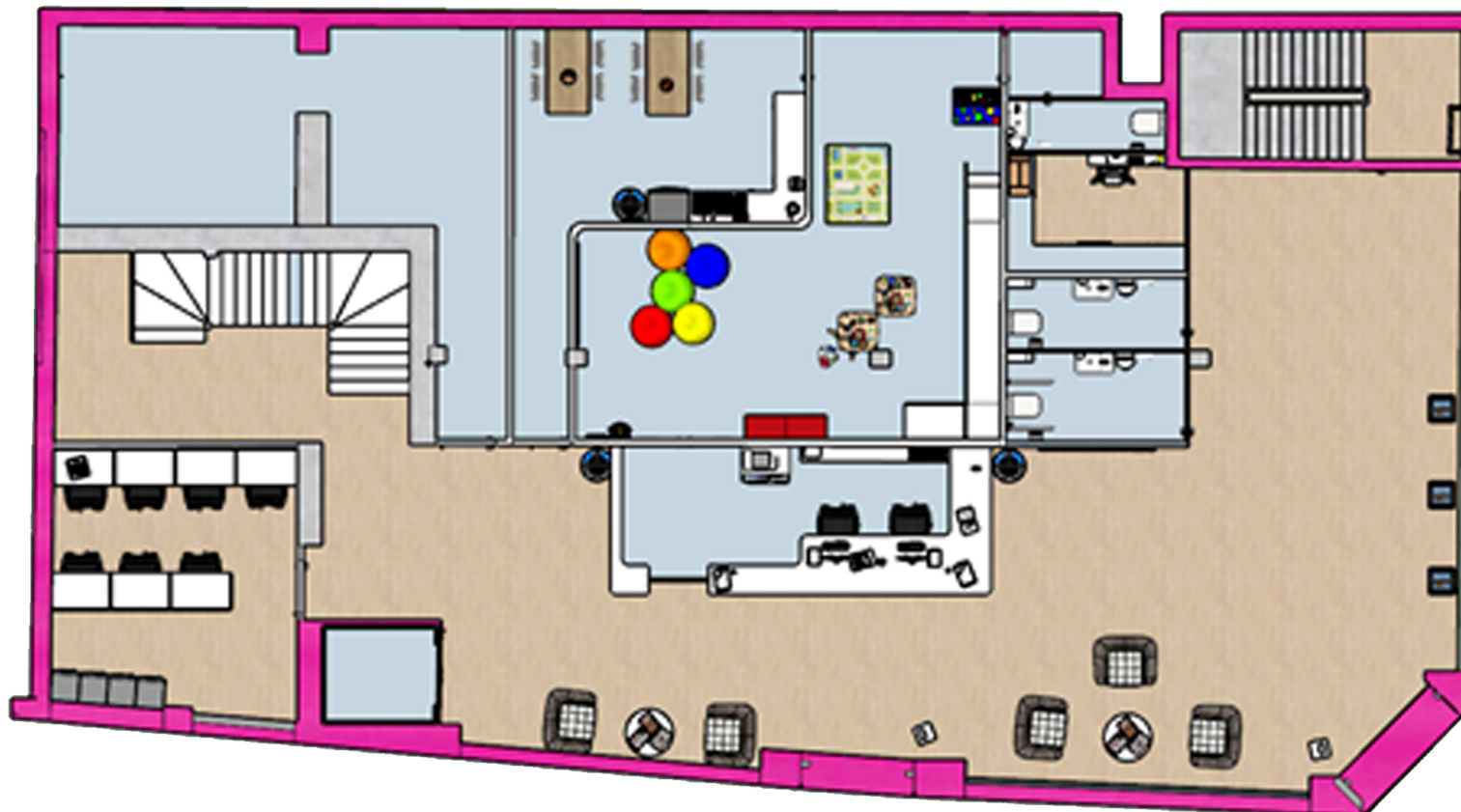


Following the Scheme Design review and listening to the feedback given I have removed the extra seating, moved the walls so they aren't cutting through the windows and switched the kitchen and waiting room around whilst also adding the curved wall onto the first and second floor to follow the same pattern as the third floor.

Second Floor



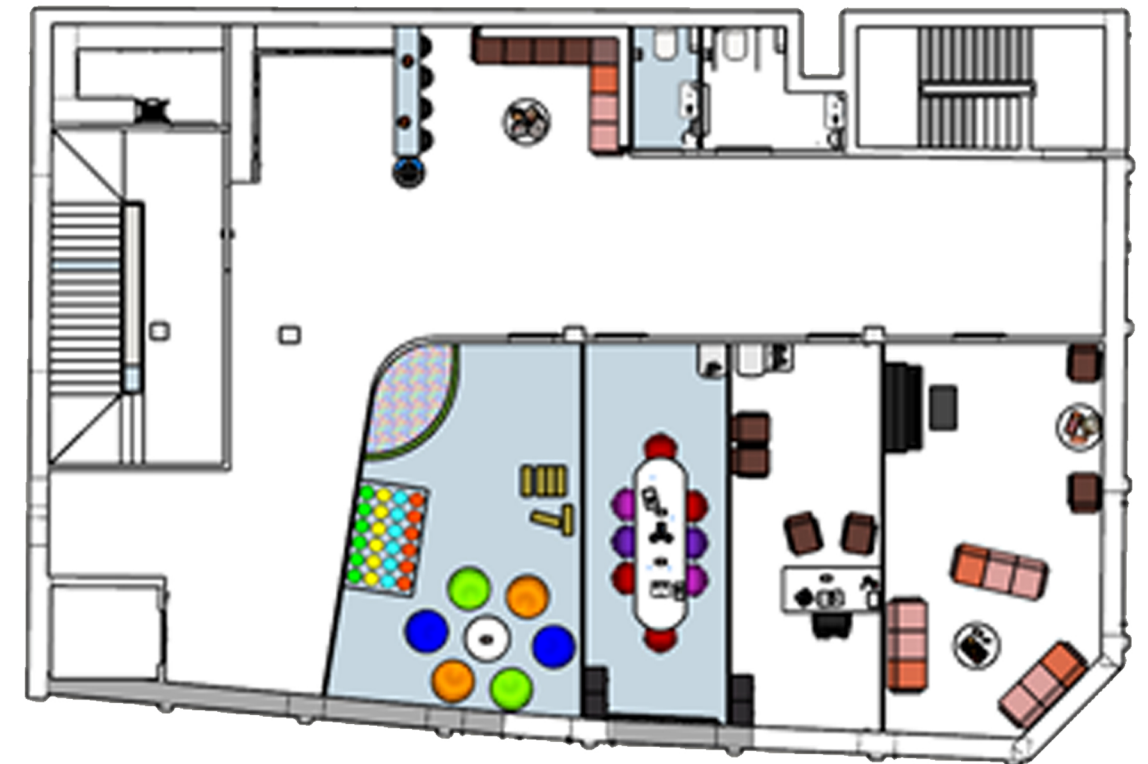
Ground Floor



Third Floor

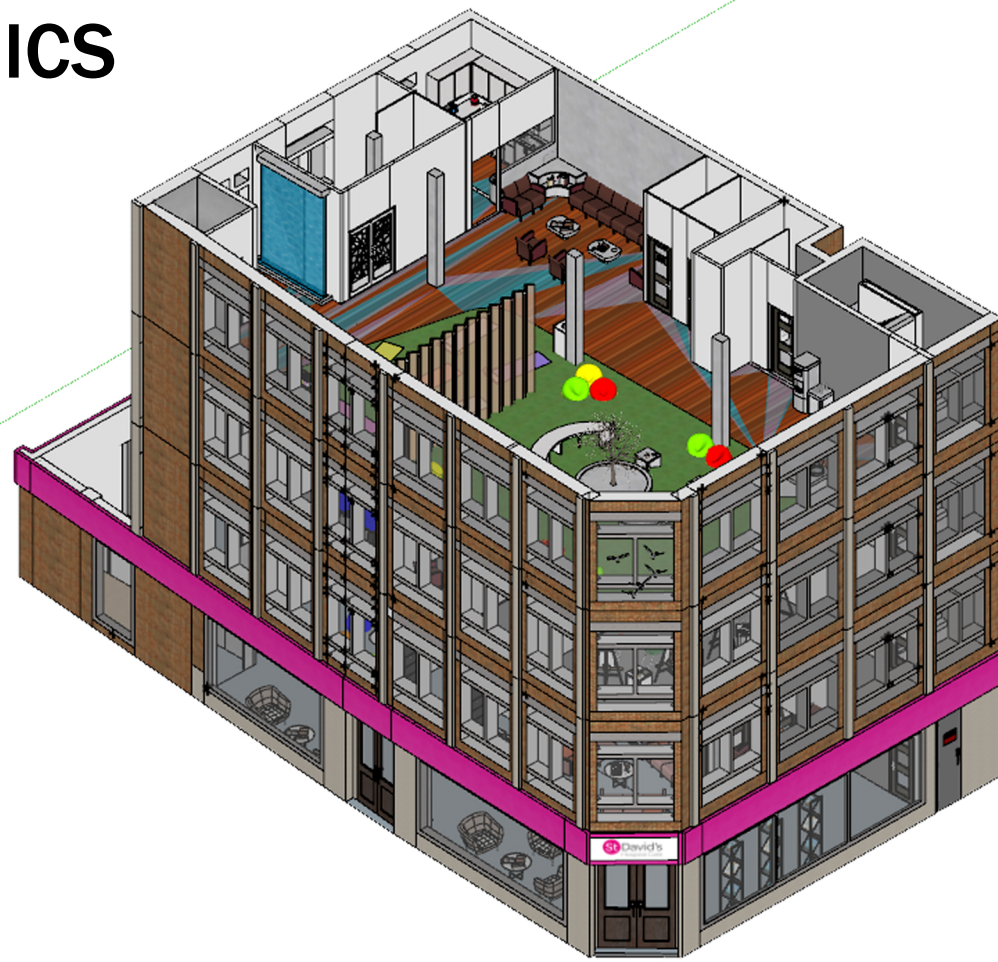


First Floor

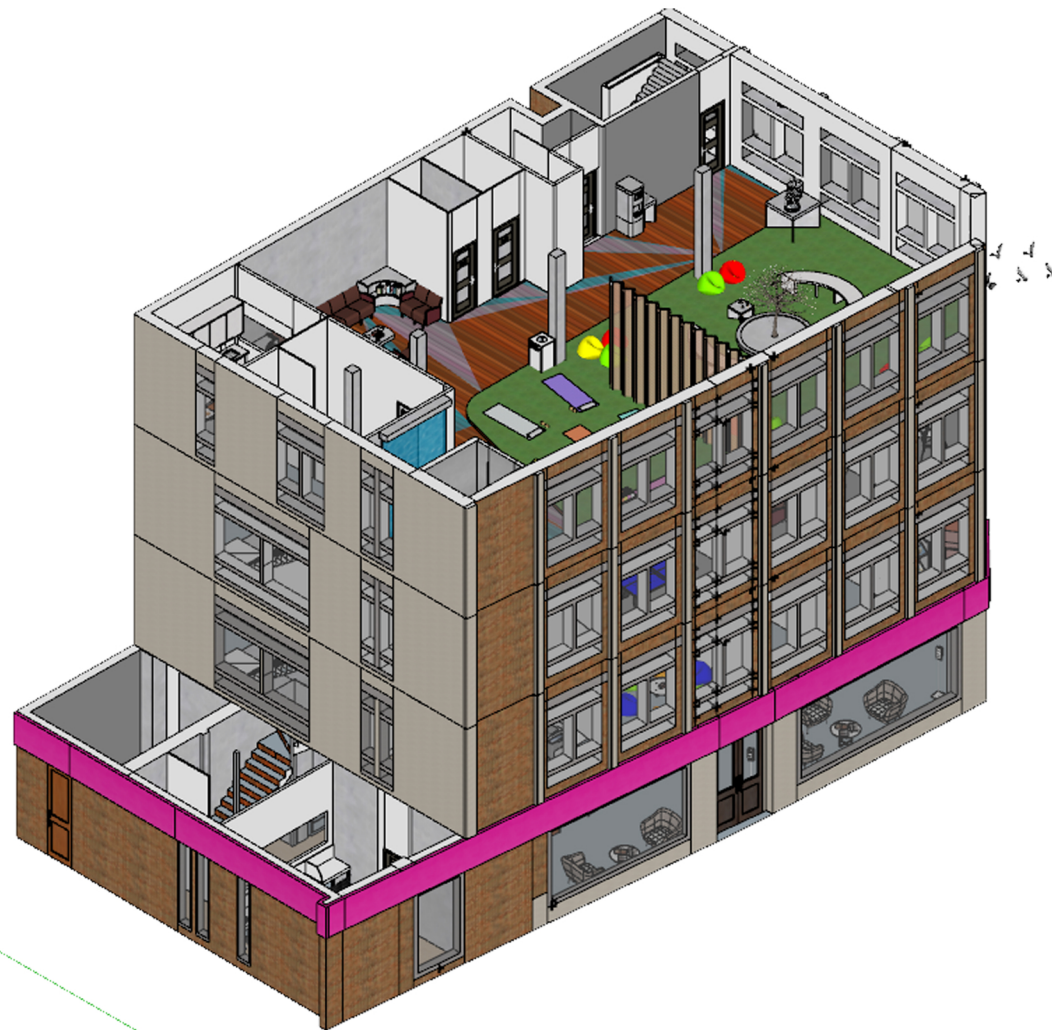




# AXOMETRICS



Altogether I have produced an Axo of the whole building together sticking to the same materials as the original exterior building. Whilst using a pink border to stick to my clients theme 'St Davids Hospice Support Centre'.



I have also shown an Axo of each of my floor plans showing what the layout will look like. On the Third Floor plan I have also included dove birds to show which windows will be used from the memory release.







# SECTIONS



Here I have shown a front and side view of my building to show all the access points available.

However, I have also produced a front and back section of my building where they have cut through the start of the stairs to show what the layout will look like and the circulation flow of the building. But also how my furniture looks inside too.



Front



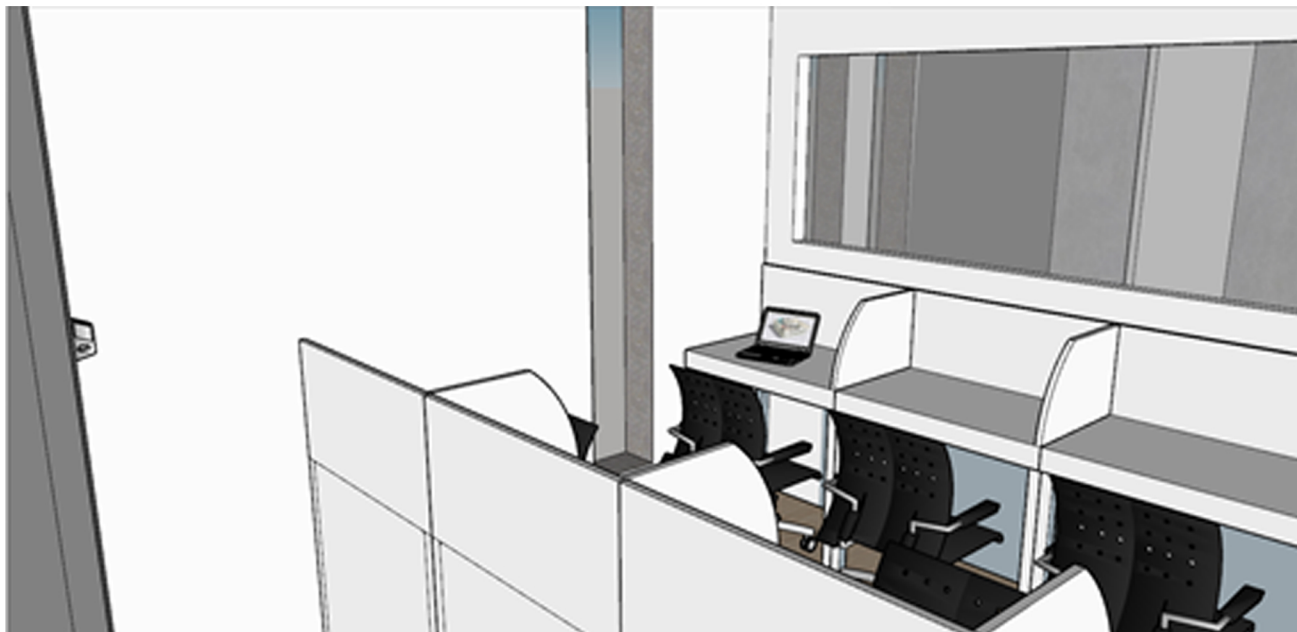
Back



## Ground Floor Visuals

Throughout my plans I decided to focus on getting all the furniture in first and then work with the materials afterwards in order to give me a better understanding of how the furniture corresponds to the overall layout. Lastly I will add plants as they slow the software down very quickly. I have taken visuals from all rooms showing the layouts that I have produced. At the moment i still need to add more furniture into the office space, kitchen and finalise the layout of the kids play area as well as adding plants and materials in order to finalise my design.

### Office Space



### Reception from the lift



### Reception from the leaflet stands



### Staff Kitchen/Room



### Kids Play area





## First Floor Visuals

On the First Floor plan I have produced the Recreational rooms for adults and kids whilst on the wall I will have a feature wall to make the space more comforting and relaxing for the clients to open up about there feelings. I have also shown that the conference room has a projector for presentations which is fitted above the window to so that the room can be made dark. And a meeting space where the start of support sessions can be set in place for when they are needed or to update the patients information about their health.

### Conference Room



### Waiting Area/Kitchen



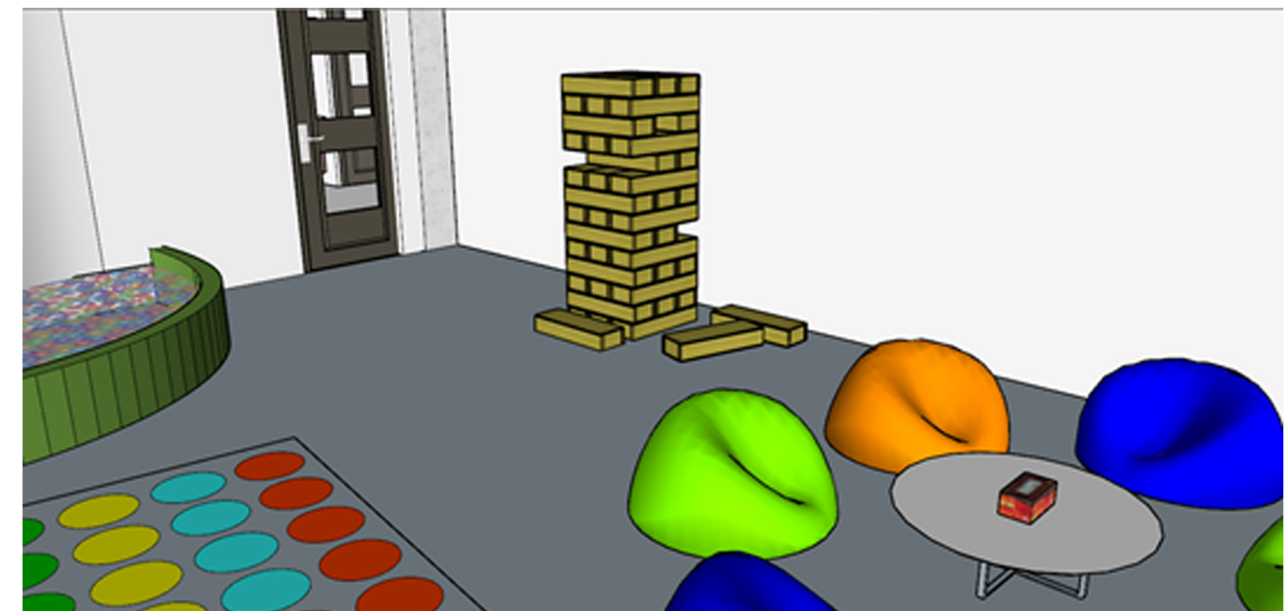
### Adult Recreational Room



### Meeting Room



### Kids Recreational Room



## Second Floor Visuals

The Second Floor Plan is a more fun and relaxing layout for clients to talk about how they are feeling, but also where they can meet other people in similar situations. From this it can be very helpful as they can become friends due to their better understanding of each others problems. I have also included a small library space above the seating area in the waiting room as I needed to make sure the hallways are clear incase of an emergency exit from the building.

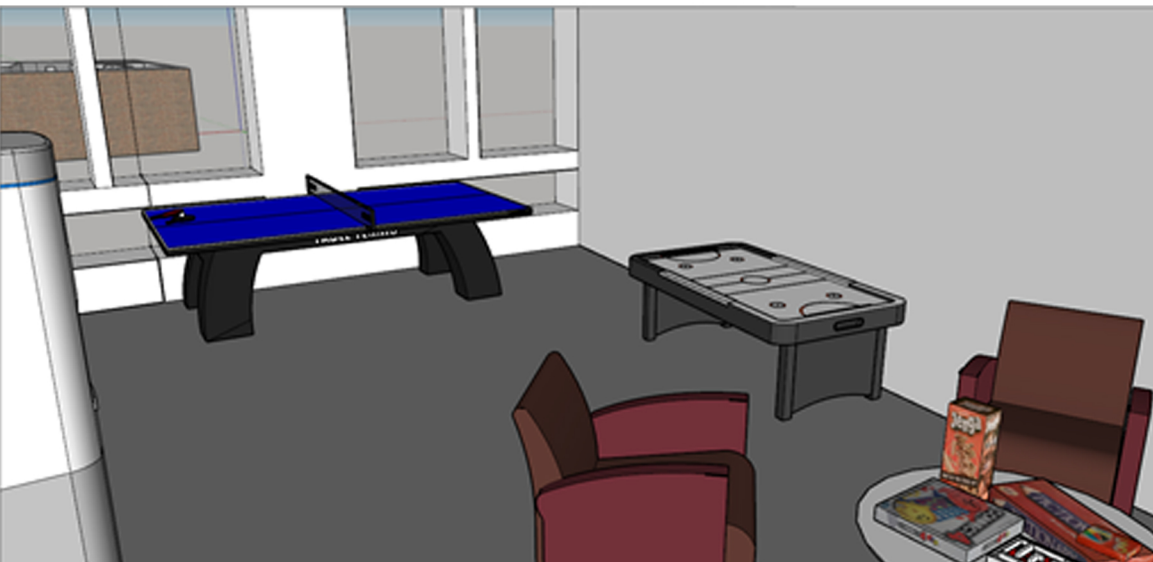
### Adult Recreational Room



### Therapy Art Room



### Kids Recreational Room



### Kitchen/ Waiting Room



### Waiting Room/ Hallway



### Therapy Craft Room



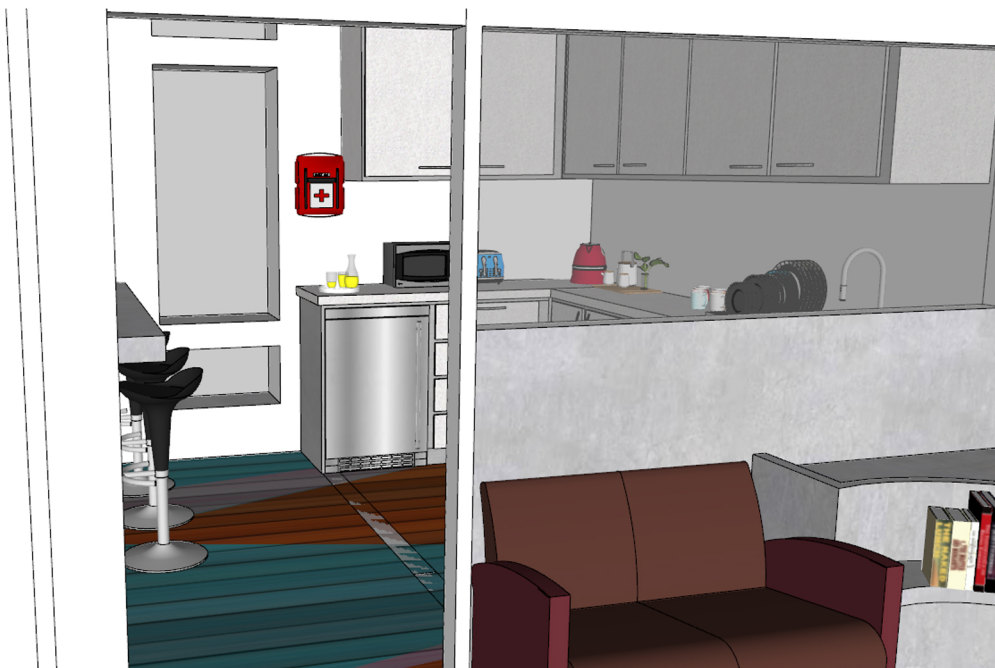


### Third Floor Visuals

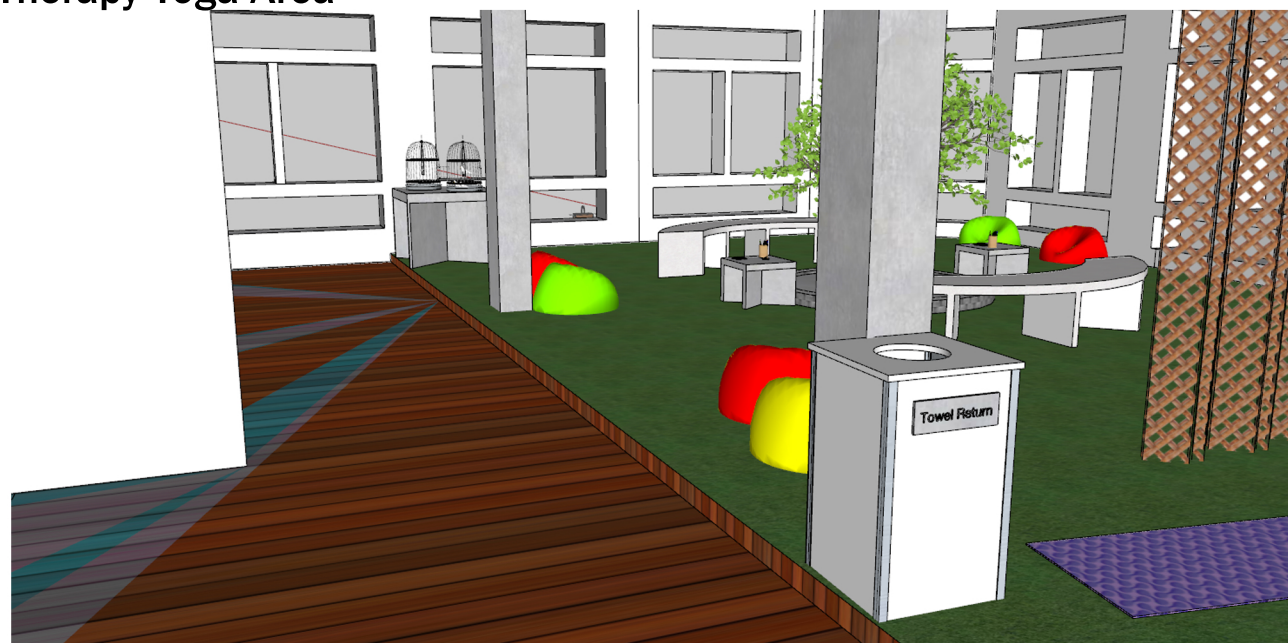
On the Final Floor plan I have designed it to be more open planned and to feel more like a garden where you feel free. From this I have included a water feature to calm and have a soothing feel whilst also including a memory tree for a more sentimental feeling for the clients whilst having therapy dogs in the area where they find comfort. I have also included an area where people can release doves for their loved ones as a final send off.

However, one plan that I would like to do is to raise the Therapy and memory area up including a ramp for wheelchair users so it feels like your on decking or grass as a garden isn't all one level.

### Kitchen



### Therapy Yoga Area



### Memorial/ Therapy Area



### Waiting Area



### Yoga Area looking towards Waiting Area

